



YOSHIMURA

RESEARCH&DEVELOPMENT OF AMERICA, INC.

5420 DANIELS STREET STE A, CHINO CALIF. 91710 · (800)634-9166 · (909)628-4722 · FACSIMILE (909)591-2198

www.yoshimura-rd.com

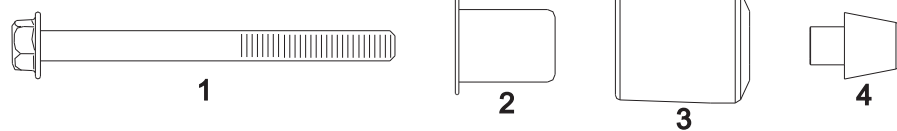
CHASSIS PROTECTOR SET

BMW
2010-2011
S1000RR

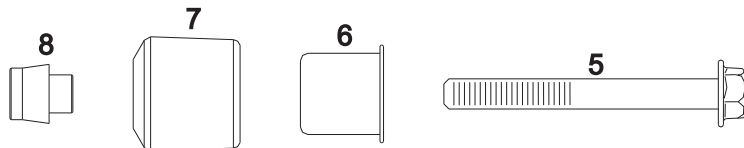
1520-A103 CHASSIS PROTECTOR SET



Left Side



Right Side



Parts Diagram

Part List:

1	10mm x 90mm Bolt	1	M10X90H
2	Left Insert	1	1115-A03-01-IK
3	Left Chassis Protector	1	1115-A03-01
4	Aluminum Spacer (Left Side)	1	1115-A02-03
5	10mm x 80mm Bolt	1	M10X80H
6	Right Insert	1	1115-A05-01-IK
7	Right Chassis Protector	1	1115-A05-01
8	Aluminum Spacer (Right Side)	1	1361-A02-01
**	Yoshimura Sticker	2	17020C

Caution: Engine mount bolts can be extremely hot. Let motorcycle cool down before beginning installation. Always wear hand and eye protection and take precautionary measures to avoid injury.

Note: Read through all instructions before beginning installation.

Tools Needed:

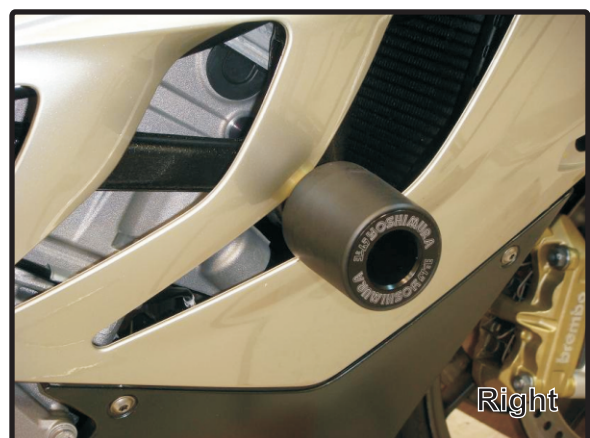
Ratchet and Extension
Metric Allen Socket Set
Torx Bit Set
Torque Wrench

Installation Steps:

1. Remove left engine mount bolt using correct Torx bit.
2. Install left side chassis protector, arranging components as listed on front page parts diagram (Fig. 1).
3. Torque chassis protector bolt to 41.5 ft-lbs (56 N-m).
4. Remove right engine mount bolt using correct Torx bit. Be sure to locate the original frame inserts and make sure they are not removed from the frame.
5. Install right side chassis protector, arranging components as listed on front page parts diagram (Fig. 2).
6. Torque chassis protector bolt to 41.5 ft-lbs (56 N-m).



Left
Fig. 1



Right
Fig. 2